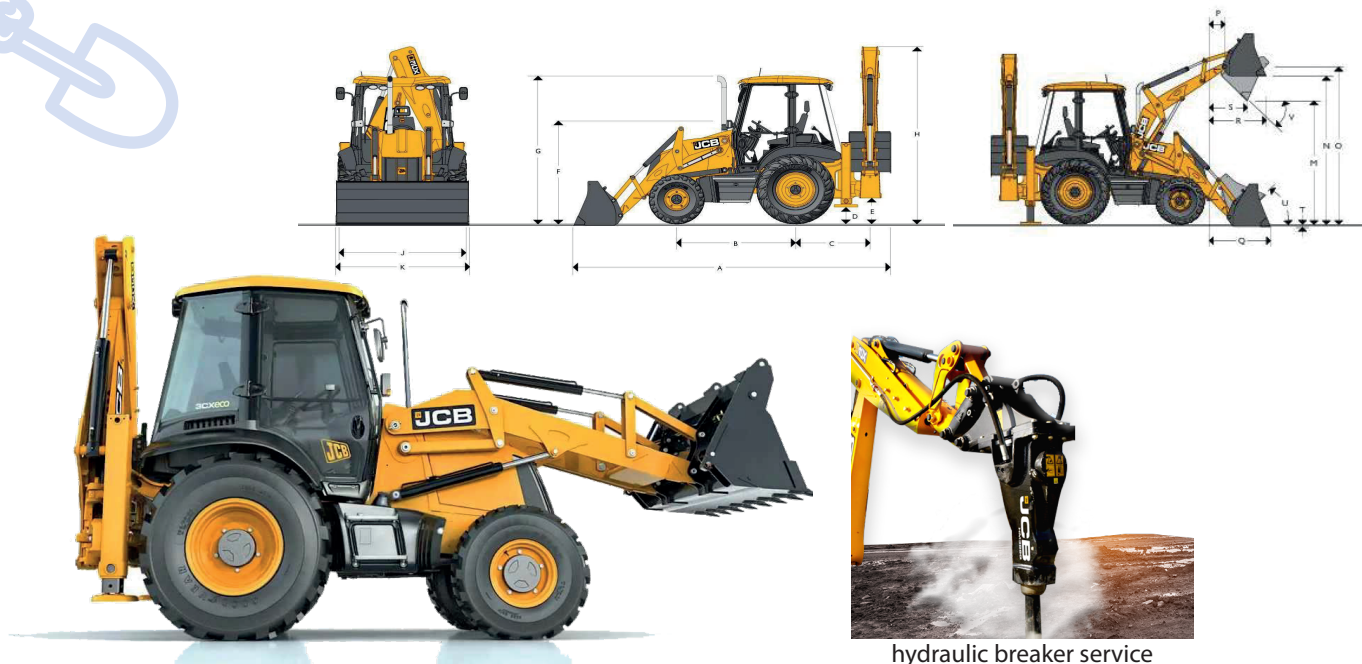


# Earthmoving Equipment

## i. Backhoe Loader

1.



SK Code	567500
Commodity Name	TIR Rollere Shovel 1.0
Manufacturer	JCB
Model	3CX2WD
(A) Total travel length (m)	5.62
(B) Axle centreline distance (m)	2.17
(C) Slew centre to rear axle centre distance (m)	1.36
(D) Stabiliser feet clearance (m)	0.37
(E) Kingpost clearance (m)	0.52
(F) Steering wheel centre height (m)	1.94
(G) Cab roof height (m)	2.91
(H) Total travel clearance (m)	3.61
(J) Rear frame width (m)	2.35(7-8)
(K) Shovel width (m)	2.35(7-8)
Max engine power (kW)	74.2
Backhoe dig depth (mm)	5.97
Loader capacity (m <sup>3</sup> )	1.0
Dry weight	7,370
Fuel tank capacity (ℓ)	160
Fuel type	Diesel
Hydraulic system capacity (ℓ)	132
(M) Dump height (m)	2.74
(N) Load over height (m)	3.23
(O) Loader hinge pin height (m)	3.45
(P) Pin forward reach (m)	0.36
(Q) Reach at ground (toe plate horizontal) (m)	1.42
(R) Max. reach at fully dumped (m)	1.20
(S) Reach at full height fully dumped (m)	0.83
(T) Dig depth (m)	0.07
(U) Roll back at ground	45°
(V) Dump angle	43°