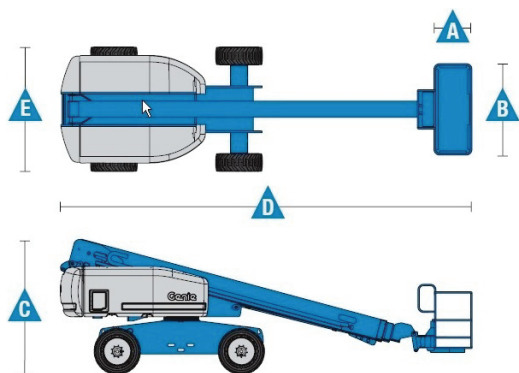


Aerial Work Platforms

ii. Telescopic Boom Lift

8.

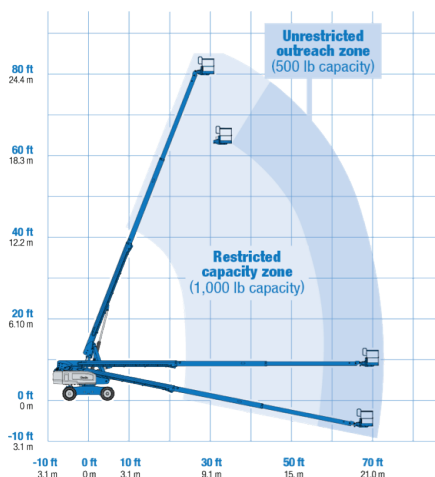


S-80

S-60

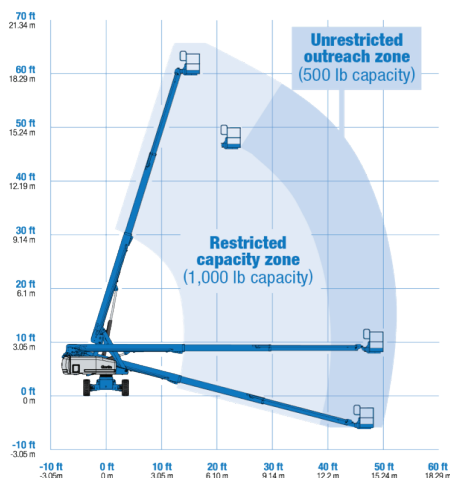


S[®]-80 X



RANGE OF MOTION

S[®]-60 X



SK Code	472701	472641
Commodity Name	Telescopic Boom Lift Wheel 18	Telescopic Boom Lift Wheel 24
Manufacturer	GENIE	GENIE
Model	S-60	S-80
working height maximum (m)	19.79	26.40
Platform height maximum (m)	17.79	24.40
Horizontal reach maximum (m)	15.48	21.80
(A):Platform length (m)	0.91	0.76
(B):Platform width (m)	2.44	1.83
(C):Height - stowed (m)	2.27	2.80
(D):Length - stowed (m)	8.46	11.10
(E):Width (m)	2.49	2.50
Lift capacity (kg)	227	227
Power source	Diesel engine	Diesel engine
Fuel tank Capacity (L)	132	132
Weight (kg)	9,964	16,102