

## 9. Lifting Equipment

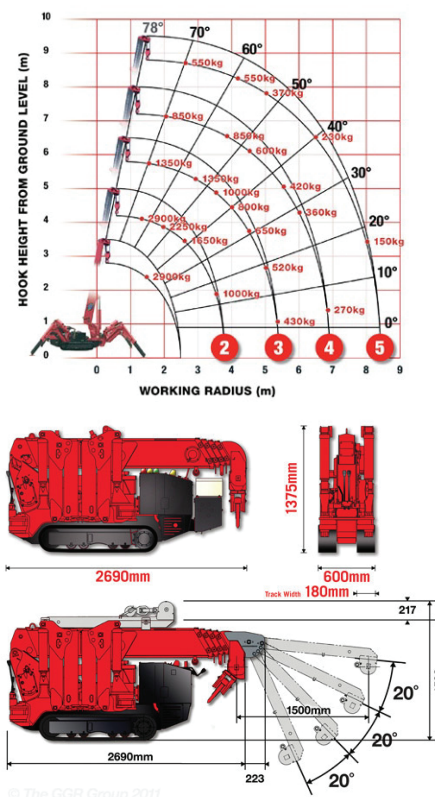
### iii. Crawler Cranes



MC285C-2



UR-W295CA



© The GGR Group 2011

SK Code	469200	
Commodity Name	Crab crane	Crab crane
Manufacturer	UNIC	MAEDA
Model	UR-W295CA	MC285C-2
Type	Electric Motor & Gasoline Engines	Electric Motor & Diesel
Maximum lifting load x working radius	2.93t x 1.4 m	2.82t x 1.4m
Maximum working radius (m)	0.45 to 8.41	8.205 x 0.15t
Hook height about ground Level (m)	Max 8.8	8.7
Hook height below ground Level (m)	Max 11.7	10.1
Boom length (M)	Min. 2.53 to Max.8.65	2.535-8.575
Boom Extending Speed	6.12m / 11.0 Sec.(Gasoline engine ) 6.12m /34.0 Sec. (Electric Motor.50Hz)	6.00m/22sec -
Boom sections	5	5
Boom raising (angle / speed)	0° to 78°/11.0 sec. (Gasoline engine)	-
Winch speed (Single line)	40.0m/min at 4th Layer (Gasoline engine)	-
Hook speed (4 part line)	10.0 m/min at 4th Layer (Gasoline engine)	9.3 m/min
Swing rotation	360° Continuous rotation (right or left) non stop	360deg/1.0rpm
Swing speed (rpm)	1.5	1.0rpm
Outriggers	Double acting hydraulic cylinders w/pilot operated check valves	1ST Stage with flexible stay damper 25stage manual payout, hydraulic cylinder direct acting type
Fuel tank (L)	10	12.0
Dimensions - transportation (L x W x H) (mm)	2,690 x 600 x 1,430	2,750 x 750 x 1,470
Weight (kg)	1,950	2,120kg
Fuel Type	Gasoline	Diesel